



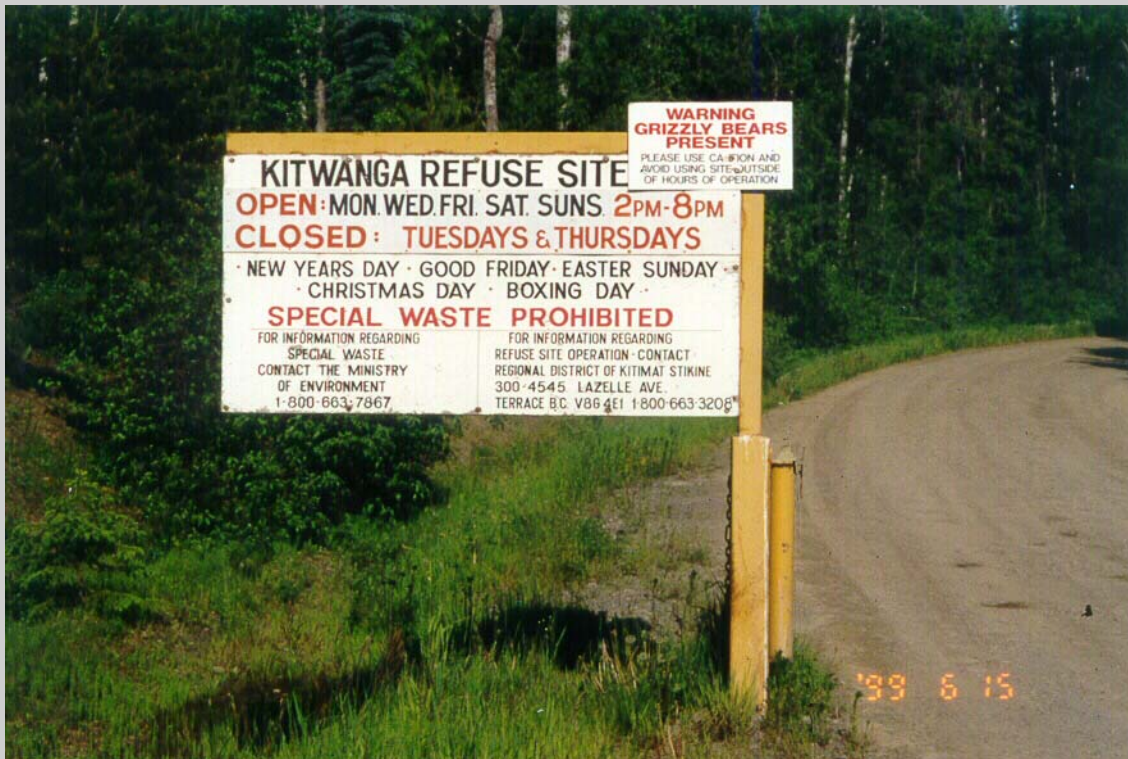
# Case History CLOSURE PLAN

**SPERLING  
HANSEN  
ASSOCIATES**

## **KITWANGA LANDFILL Closure Plan**

- *Design Waste Volume*
- *Final Contour Design*
- *Final Closure Design*
- *Assessment of Haul Option*
- *Conceptual Transfer Station Design*

**REGIONAL DISTRICT OF KITIMAT-STIKINE: Mr. Roger Tooms (250) 615-6100**  
**Project Budget: \$11,395**



**SPERLING HANSEN ASSOCIATES**  
**#8-1225 East Keith Road, North Vancouver, B.C.**  
**Phone (604) 986-7723 Fax (604) 986-7734**  
**E-Mail: [sperling@sperlinghansen.com](mailto:sperling@sperlinghansen.com)**

- **Landfill Siting**
- **Landfill Closure**
- **Hydrogeological Investigations**
- **Environmental Monitoring**
- **Design and Operations Plans**